

CABLE 410 RF: SMA RIGHT ANGLE PLUG + SMA RIGHT ANGLE BULKHEAD JACK WITH O-RING RATED TO IP67/68 + RG178 CABLE, 6GHz

SPECIFICATIONS :

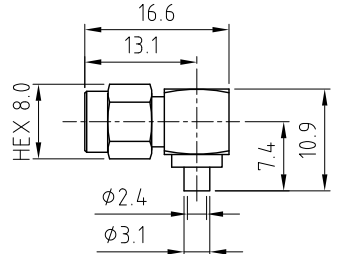
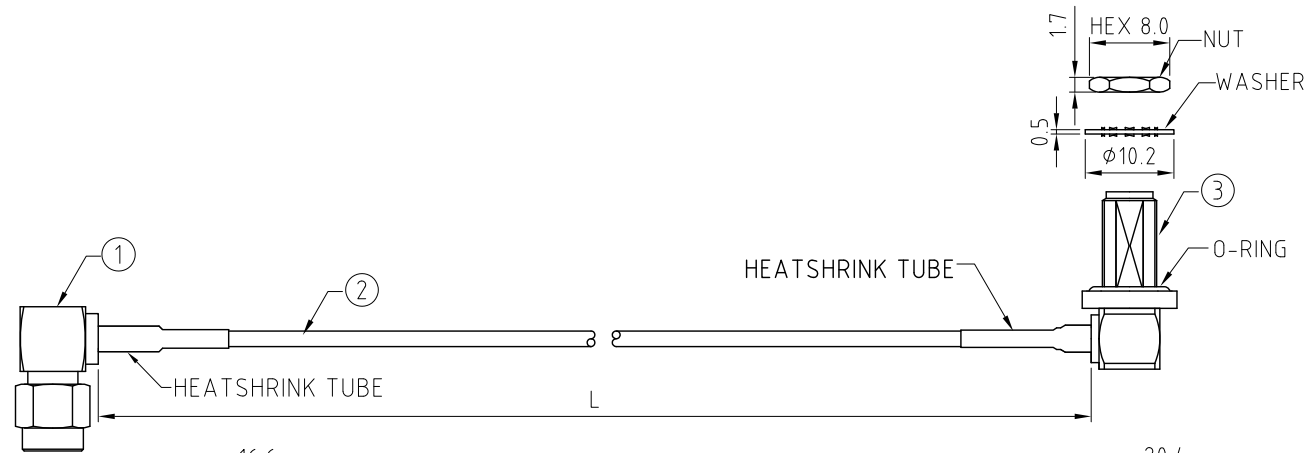
1. SMA RIGHT ANGLE PLUG, P/N: RFCT-SMA025-M78.
2. RG178 COAXIAL CABLE, COLOR: BROWN.
3. SMA RIGHT ANGLE BULKHEAD JACK WITH O-RING RATED TO IP67/68, GOLD PLATED, P/N: RFCT-SMA073-F78.

ENVIRONMENTAL:

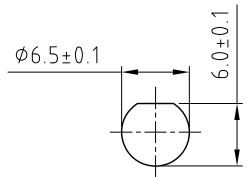
- A. BULKHEAD MOUNTED CONNECTOR (RFCT-SMA073-F78) RATED TO THE FOLLOWING SPECIFICATION:
- i. IP6X - DUST TIGHT - NO PARTICLE INGRESS.
 - ii. IPX7 WATERPROOF FOR 30 MINUTES UP TO 1 METER UNDERWATER.
 - iii. IPX8 WATERPROOF FOR 48 HOURS AT 1 METER UNDERWATER.

NOTES:

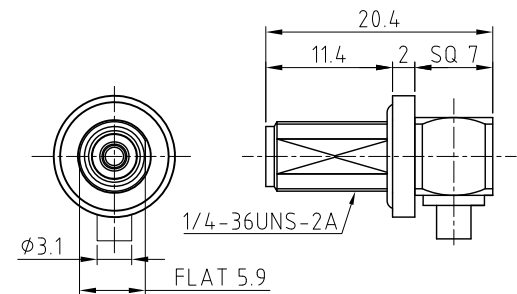
1. THE ORIENTATION OF CONNECTORS ON DRAWING IS FOR REFERENCE ONLY, IF THE ORDER IS LEFT BLANK THE CONNECTOR WILL NOT HAVE FIXED ORIENTATION.
2. FIXED ORIENTATION IS SUGGESTED FOR CABLE LENGTH 25MM TO 100MM. PLEASE SPECIFY THE FIXED ORIENTATIONS FROM THE ORDER CODE (F1, F2, ETC)
3. CONTACT GRADCONN IF THE ORIENTATION YOU REQUIRE IS NOT SHOWN.
4. WORKING FREQUENCY RANGE: DC-6GHz.
5. OPERATING TEMPERATURE: -40°C TO +125°C
6. IMPEDANCE: 50 OHM



SMA R/A PLUG
DETAIL DRAWING



RECOMMENDED SMA
MOUNTING HOLE



SMA BULKHEAD JACK
DETAIL DRAWING

HOW TO ORDER

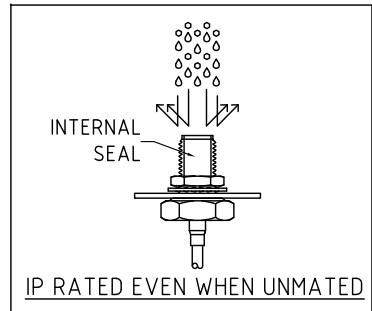
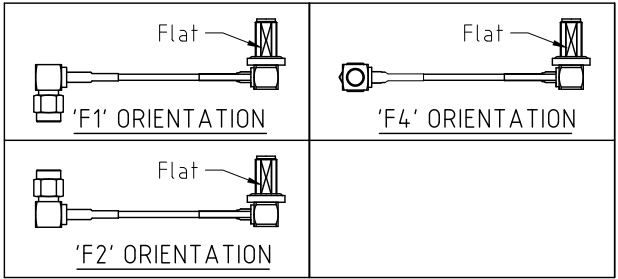
CABLE 410 RF - X X X X - X X - X - 1

"L" LENGTH IN MM:
eg: 100MM = 0100
(MIN. 0050-MAX.2000
STANDARD = 0100, 0150, 0200)
Tolerance: 50-200mm: ± 5 mm.
201-500mm: ± 7 mm.
501-999mm: ± 10 mm.
 ≥ 1000 mm: $\pm (L \times 0.02)$ mm

CABLE SIZE:
1 = RG178 CABLE, COLOR: BROWN.

WASHER AND NUT OPTIONS:
BLANK = SEPERATELY PACKED (STANDARD)
A = ASSEMBLED WITH CONNECTOR

ORIENTATION OPTIONS:
BLANK = DOES NOT HAVE FIXED ORIENTATION
F1 = OPPOSITE ORIENTATION (L=50-200MM)
F2 = SAME ORIENTATION (L=50-200MM)
F3 = LEFT CONNECTION SAME AS D-FLAT (L=50-200MM)
F4 = LEFT CONNECTION OPPOSITE TO D-FLAT (L=50-200MM)
(SEE NOTES 1, 2, 3 AND DIAGRAMS FOR MORE INFORMATION)



REV. DATE & DRN
10. 17/06/20 - CC RELEASE
11. 14/06/22 - NYM
12. 14/07/22 - CC
13. 14/07/22 - CC
14. 22/02/24 - CC
ADD NOTES 1-3
DRAWING MODIFICATION
14. 30/07/24 - CC
PROB# # RATING VIEW

Scale: NTS	THIRD ANGLE	Unstated Tolerances: .X ± 0.2 .XX ± 0.2 .XXX ± 0.2 ANGLES N/A
Drawn: CC		
App'd: XXX	Title CABLE ASSEMBLY	
Date: 31 MAR. '24	Revision: 1.4	Unit: mm



IP Rated RF Products

www.gradconn.com

THIS DRAWING IS CONFIDENTIAL AND MUST NOT BE COPIED OR DISCLOSED WITHOUT WRITTEN CONSENT

Type: Cable 410 RF
CABLE 410 RF
Drawing Number:
Sheet 1 of 1
Drawing © E and O E